

CONFERENCES & EVENTS



Hilton

LONDON HEATHROW AIRPORT
TERMINAL 5

WELCOME TO HILTON LONDON HEATHROW AIRPORT TERMINAL 5

Whether you are hosting an intimate board meeting or large conference, Hilton London Heathrow Airport Terminal 5 offers a superb location, versatile space and state-of-the-art facilities to suit your requirements.

Nestled among beautiful landscaped gardens, the hotel boasts outstanding travel connections. London Heathrow Airport is just over a mile away and the iconic sights of Central London are easily reachable by train or by car via the M3, M4 and M25 motorways.

Benefit from versatile conference space including the stylish Gallery Rooms, accommodating up to 1,170 delegates theatre-style and 800 for a banquet. Then after a day of meetings, our tempting restaurants and calming spa are at hand to help you unwind.

Throughout your time at Hilton London Heathrow Airport Terminal 5, our dedicated Hilton Team Members offer the support to make your event a memorable success and bring your ideas to life.





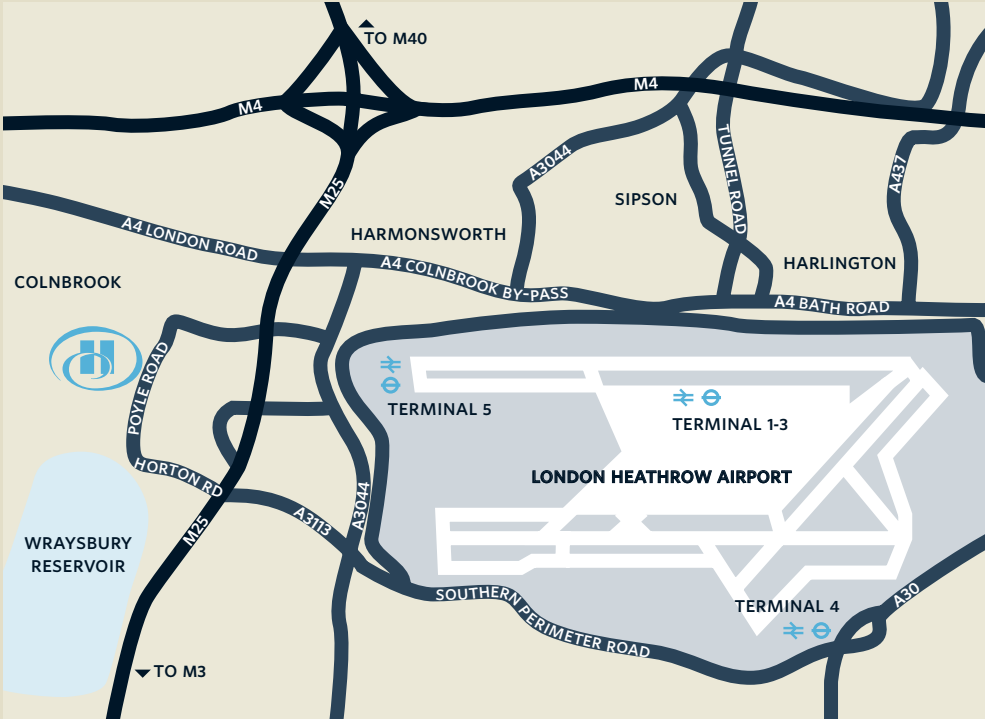
LOCATION

Located near Heathrow Airport, the hotel is perfectly positioned for business and leisure.

Hilton London Heathrow Airport Terminal 5 is close to Central London, with excellent transport links by road, rail and air. The hotel can be reached from Heathrow Airport by the National Express Hoppa service and offers 484 spaces of secure car parking to all Guests.

The M3, M4 and M25 motorways allow easy access to the city's historic attractions and three of Europe's largest business parks, Stockley Park, Bedfont Lakes and Slough Trading Estate, situated within a 5-mile radius.

The hotel offers a complimentary corporate shuttle to both Stockley Park and Bedfont Lakes, available Monday to Friday at scheduled times.



AT A GLANCE

GUEST ROOMS

	Total
Guest Rooms	258
King Bed	147
Twin Beds	97
King Bed Accessible	14
Family Rooms	4
King Bed	4
Executive Rooms	85
King Bed	48
Twin Beds	33
King Bed Accessible	4
Suites	3
One Bedroom Suite	2
Deluxe One Bedroom Suite	1
Total	350

- 350 spacious guest rooms
- Executive rooms and suites include access to the Executive Lounge
- Complimentary high speed wireless internet
- Complimentary access to Imagine Spa

AMENITIES & SERVICES

- Complimentary high speed internet access
- Business Centre
- Self-controlled air-conditioning/heating
- 37" HD LCD screens
- Over 100 digital channels and movies on demand
- Fully stocked Mini-bar
- Tea & coffee making facilities
- Laptop safe
- In-Room Dining 24 hours, 7 days a week
- Spacious working area
- MP3 alarm clock
- UK/US power sockets

EAT & DRINK

- Mr Todiwala's Kitchen
- The Gallery
- Gallery Bar
- River Bar
- Musetti

LEISURE FACILITIES

- Imagine Spa
- Hilton Fitness 24 hours, 7 days a week
- Local running routes

LOCAL ATTRACTIONS

- Windsor Castle – home of Her Majesty the Queen
- Ascot, Windsor and Sandown Park racecourses
- Kew Gardens
- Virginia Water
- Westfield Shopping Centre
- Central London

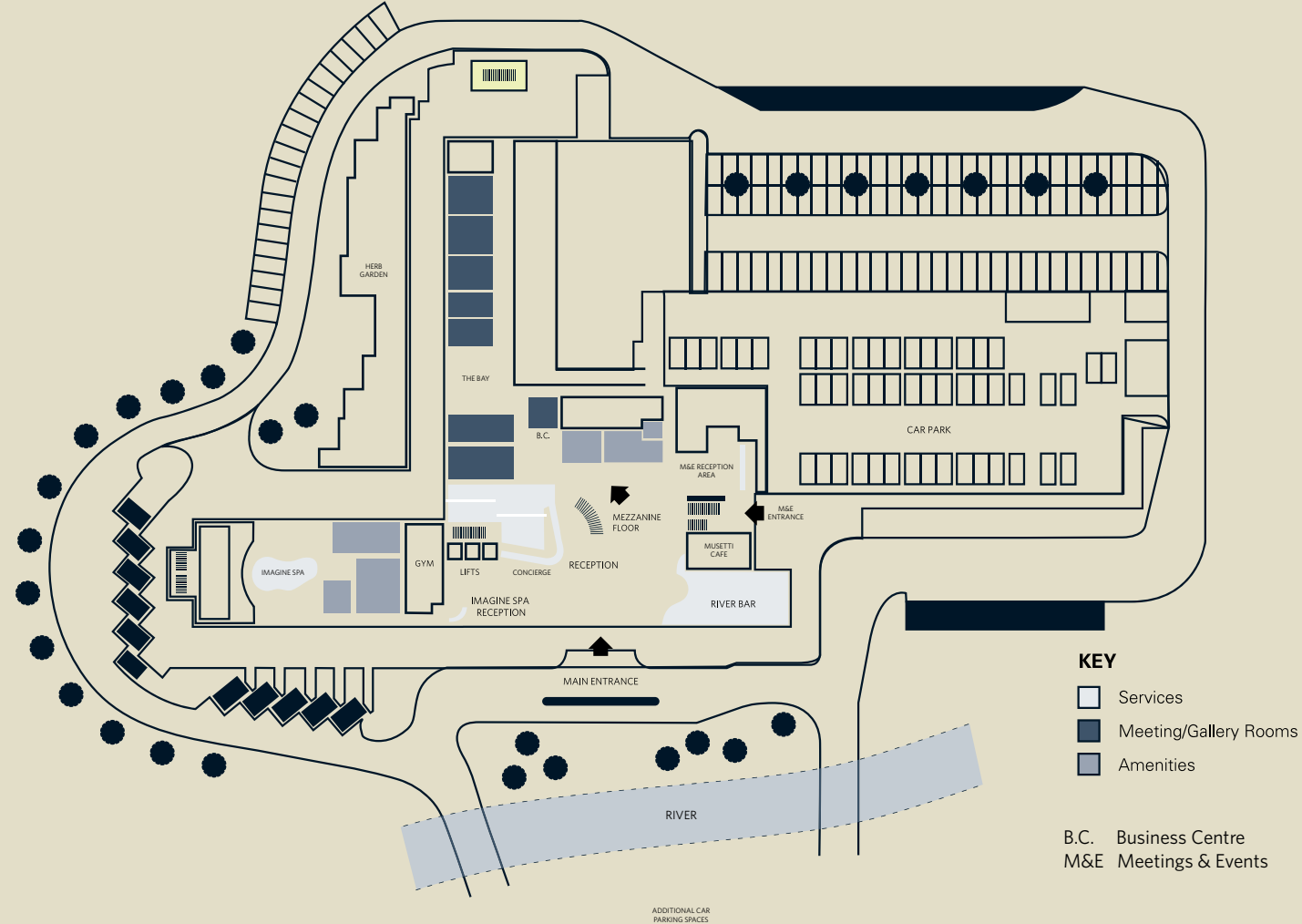
MEETINGS

- Gallery Rooms accommodating 1,170 theatre-style and 800 banquet-style
- 850m² Ballroom
- 350m² reception space
- 2 Executive Boardrooms
- 5 flexible meeting rooms
- Refreshment bar

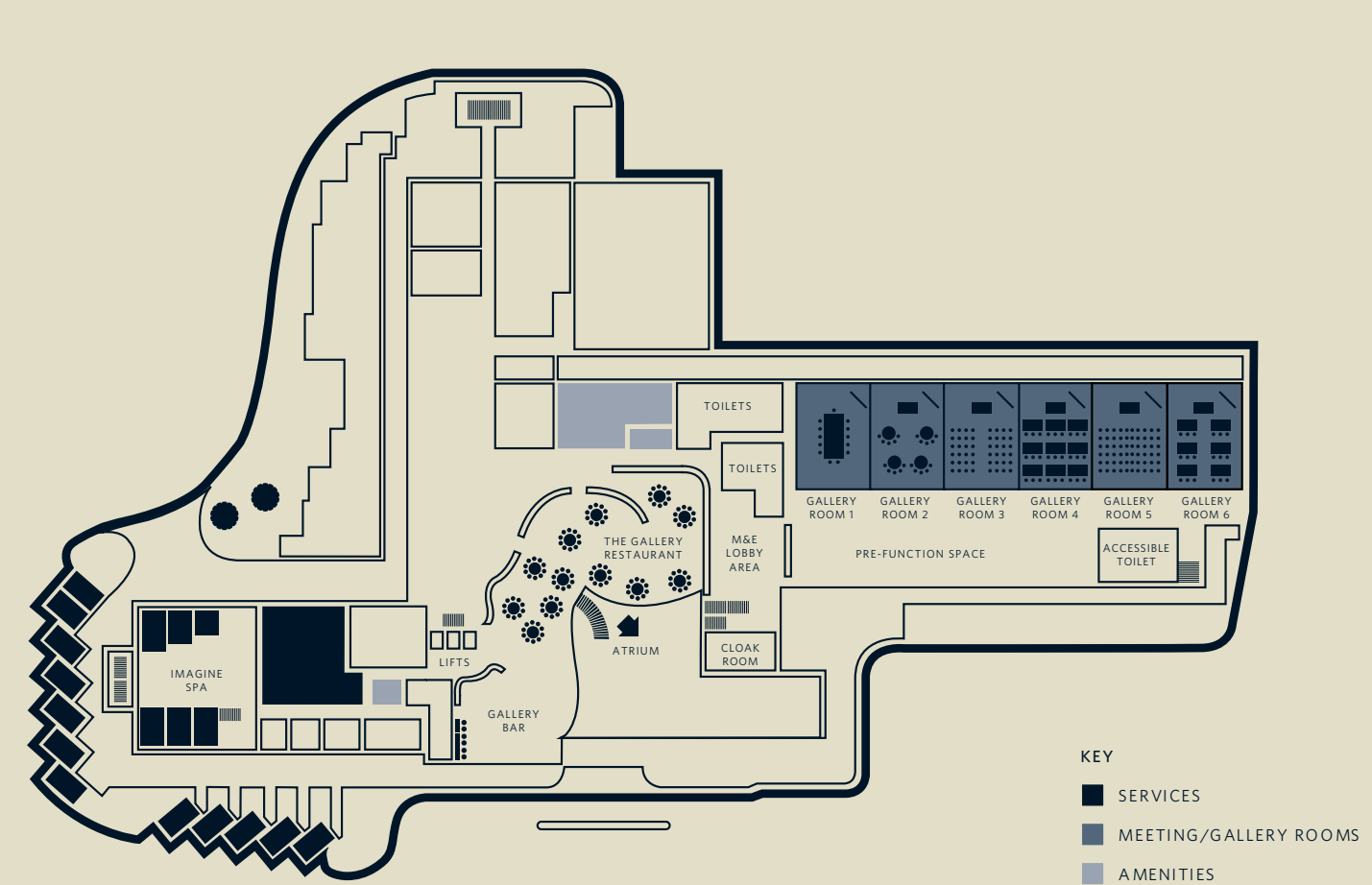
CHECK-IN/CHECK-OUT

Check-In: 3:00pm/Check-Out: Noon

OVERVIEW - GROUND FLOOR



OVERVIEW - MEZZANINE FLOOR



MEETINGS
& EVENTS

Hold productive and memorable events, from board meetings to conventions. Hilton London Heathrow Airport Terminal 5 offers outstanding facilities and services, including:

- Gallery Rooms holding 1,170 delegates theatre-style
- 1,511m² of versatile meeting space
- 13 flexible conference and meeting rooms for individual use or breakout sessions
- Cargo lift access to the Gallery Rooms for vehicles, staging and equipment
- Dedicated pre-function space ideal for exhibitions, pre-dinner drinks or breakout sessions
- The Bay offers dedicated breakout space for our smaller meeting rooms, providing unlimited refreshments and snacks
- Dedicated reception for delegate registration and accommodation Check-In
- Self-contained conference entrance
- 350 contemporary and spacious guest rooms
- Cloakroom
- Banqueting and dining for up to 800 guests in one room
- Complimentary high speed wireless internet
- State-of-the-art audiovisual and lighting solutions
- Business Centre



**MEETINGS & EVENTS
RECEPTION**

Arrive in style and benefit from private Check-In and event registration with our self-contained Meeting & Events Reception.

Space for banners, exhibition displays and plasma screens creates an instant impression as your guests mingle, before they make their way to the Gallery Rooms via stairs and lifts. Make the most of direct access to the secure car park for ease of arrival and departure of delegates.



GALLERY PRE-FUNCTION AREA

A rejuvenating space to hold reception drinks or to simply relax between meetings.

Bathed in natural daylight and showcasing river views, the 350m² venue is suitable for exhibitions, conference breaks and networking lunches. The pre-function area also has its own cloakroom available and direct access to The Gallery restaurant for seated lunches.



THE GALLERY ROOMS - CONFERENCES

Flexible space easily adapted to suit your specific requirements. Accommodating up to 1,170 delegates theatre-style, the Gallery Rooms are divisible into six large sections as breakout rooms, allowing for alternative layouts. Featuring high ceilings, audiovisual support and easy entry through our cargo lift, this stylish space is perfect for conferences, exhibitions or car launches.

THE GALLERY ROOMS - BANQUETING

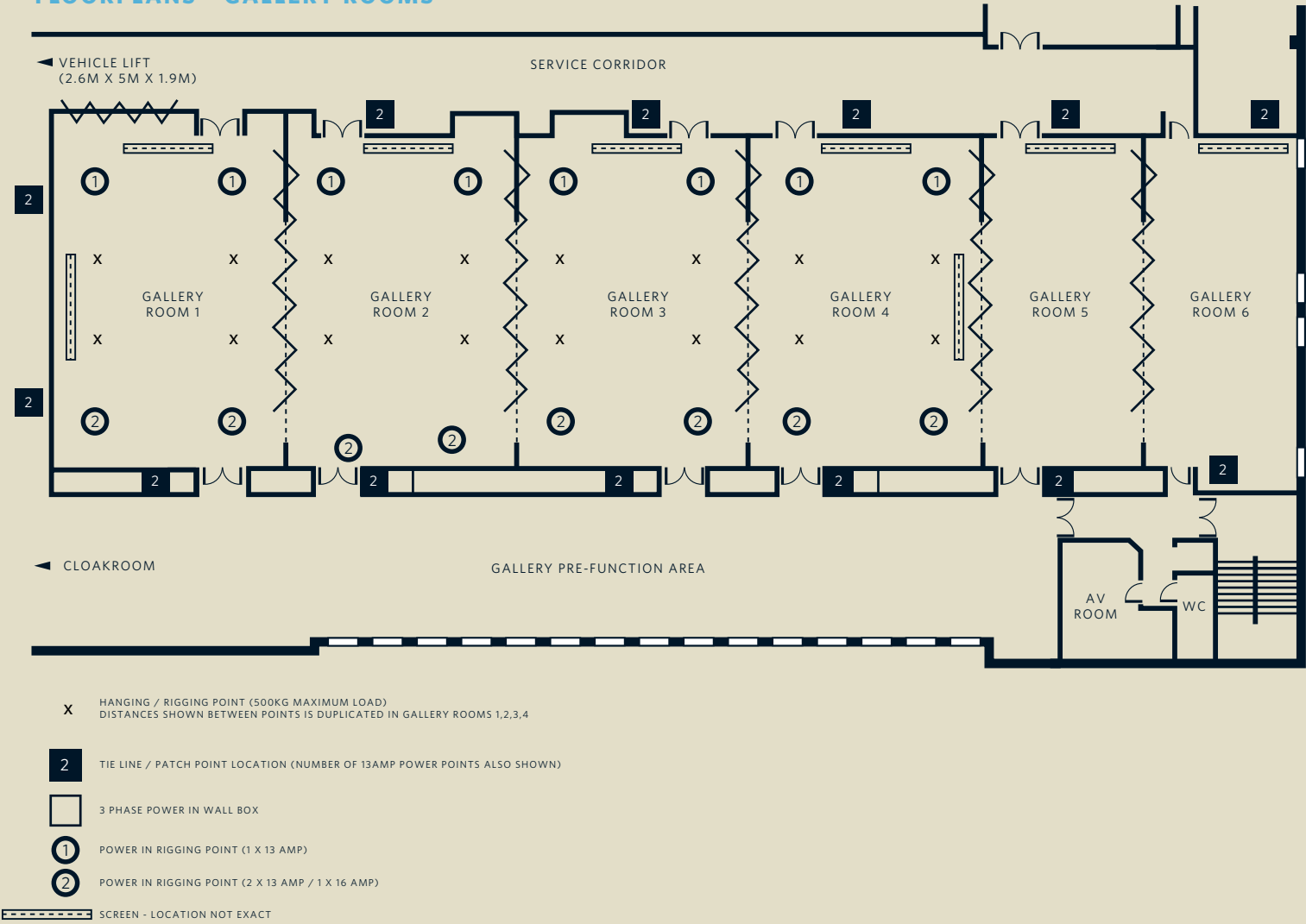
Dine in style at the perfect location for a conference or a gala evening of up to 800 people. Choose from our dedicated banqueting kitchen's delicious menus, designed to reflect your guests' tastes. Our state-of-the-art lighting allows you to change the theme of the room, from your corporate colours during the daytime to a dramatic evening look with varied lighting and drop-down chandeliers.



CAPACITIES & DIMENSIONS

			Front Projection										Back Projection			
	Area sq. m.	Dimensions L x W x H (m)	Boardroom	Hollow Square	U-Shape	Theatre	Classroom	Cabaret (8s)	Diner (10s)	Diner (12s)	Diner Dance (10s)	Diner Dance (12s)	Theatre	Classroom	Cabaret (6s)	Cabaret (8s)
Gallery Room 1	157.04	15.1 x 10.4 x 4.4	36	60	48	180	72	80	120	144	80	96	—	—	—	—
Gallery Room 2	160.06	15.1 x 10.6 x 4.4	36	60	48	180	72	80	120	144	80	96	—	—	—	—
Gallery Room 3	155.53	15.1 x 10.3 x 4.4	36	60	48	180	72	80	120	144	80	96	—	—	—	—
Gallery Room 4	160.06	15.1 x 10.6 x 4.4	36	60	48	180	72	80	120	144	80	96	—	—	—	—
Gallery Room 5	108.72	15.1 x 7.2 x 2.8	30	34	30	80	36	48	80	96	—	—	—	—	—	—
Gallery Room 6	98.15	15.1 x 6.5 x 2.8	30	34	30	80	36	48	80	96	—	—	—	—	—	—
Gallery Rooms	839.56	55.6 x 15.1 x Varies	—	—	—	1,170	430	480	680	816	580	696	812	324	288	384
Gallery Rooms 1-2	317.1	21 x 15.1 x 4.4	—	78	60	394	144	176	250	300	180	216	180	72	60	80
Gallery Rooms 1-3	472.63	31.3 x 15.1 x 4.4	—	—	—	604	234	272	380	456	320	384	394	144	132	176
Gallery Rooms 1-4	632.69	41.9 x 15.1 x 4.4	—	—	—	816	324	368	510	612	400	480	604	234	204	272
Gallery Rooms 1-5	741.41	49.1 x 15.1 x Varies	—	—	—	926	360	432	600	720	480	576	716	288	252	336
Gallery Rooms 2-3	315.59	20.9 x 15.1 x 4.4	—	78	60	394	144	176	250	300	180	216	180	72	60	80
Gallery Rooms 2-4	475.65	31.5 x 15.1 x 4.4	—	—	—	604	234	272	380	456	320	384	394	144	132	176
Gallery Rooms 2-5	584.37	38.7 x 15.1 x Varies	—	—	—	716	288	336	470	564	390	468	504	198	180	240
Gallery Rooms 2-6	682.52	45.2 x 15.1 x Varies	—	—	—	812	324	384	560	672	440	528	600	234	216	288
Gallery Rooms 3-4	315.59	20.9 x 15.1 x 4.4	—	78	60	394	144	176	250	300	180	216	180	72	60	80
Gallery Rooms 3-5	424.31	28.1 x 15.1 x Varies	—	—	—	504	198	240	340	408	290	348	292	126	108	144
Gallery Rooms 3-6	522.46	34.6 x 15.1 x Varies	—	—	—	600	234	288	430	516	370	444	388	162	144	192
Gallery Rooms 4-5	268.78	17.8 x 15.1 x Varies	—	—	—	292	126	144	210	252	160	192	—	—	—	—
Gallery Rooms 4-6	366.93	24.3 x 15.1 x Varies	—	—	—	388	162	192	300	360	240	288	—	—	—	—
Gallery Rooms 5-6	206.87	13.7 x 15.1 x 2.8	—	—	—	176	72	96	90	108	—	—	—	—	—	—
Gallery Pre-Function Space	302.94	45.9 x 6.6 x Varies														

FLOORPLANS - GALLERY ROOMS







THE SPICE TRAIL

Hold exclusive meetings in the privacy of our Ground Floor meeting space.

Our two Executive Boardrooms and five flexible meeting rooms, all flooded with natural light, offer the ideal location for meetings of up to 75 people.

All rooms come complete with integrated LCD screens, flip charts, and hot and cold drinks, with selected rooms providing video conferencing facilities. The herb gardens and hotel grounds are the ideal environment to refresh between meetings with complimentary drinks and snacks.

BOARDROOMS

An exceptional space for board meetings or VIP client events.

Filled with natural daylight, our Anise and Cinnamon rooms feature beautiful garden views and state-of-the-art meetings technology.

Display presentations on the built-in 65" LCD screen accessed through the boardroom table, with power points for each delegate also included. Ergonomic leather chairs offer comfort for your meeting, while Nobo Kapture® Digital Flipcharts make it easy to capture, edit and share notes instantly onto your laptop.

FLOORPLANS - MEETING ROOMS



CAPACITIES & DIMENSIONS

	Area sq.m.	Dimensions L x W x H (m)	Boardroom	U-Shape	Theatre	Classroom	Cabaret (50)
Anise Boardroom	56.16	10.4 x 5.4 x 2.5	18	—	—	—	—
Cinnamon Boardroom	46.8	10.4 x 4.5 x 2.5	17	—	—	—	—
Jasmine Room	23.22	4.3 x 5.4 x 2.5	8	—	10	—	—
Juniper Room	22.68	4.2 x 5.4 x 2.5	8	—	10	—	—
Saffron Room	30.78	5.7 x 5.4 x 2.5	12	14	18	14	—
Tamarind Room	33.48	6.2 x 5.4 x 2.5	12	14	18	14	—
Wasabi Room	34.56	6.4 x 5.4 x 2.5	12	14	18	14	—
Saffron Suite	64.26	11.9 x 5.4 x 2.5	24	26	42	22	20
Tamarind Suite	68.04	12.6 x 5.4 x 2.5	30	33	42	24	20
Wasabi Suite	98.82	18.3 x 5.4 x 2.5	42	44	75	42	30
The Bay (Breakout Area)	83.95	11.5 x 7.3 x 2.5					





OUR ROOMS

Wake up in one of our stylish guest rooms, perfect for an overnight stay.

Beautifully appointed with triple-glazed windows, our 350 spacious accommodations feature 28m² of contemporary space and comfortable Hilton Serenity™ beds for a peaceful sleep. Catching up on work is easy with generous workspace and complimentary high speed wireless internet; then, during down time, relax with the 37" flat-screen TV and bathroom facilities. Executive rooms and one and two-bedroom suites provide extra comfort and access to the Executive Lounge.



OUR FACILITIES

IMAGINE SPA imagine

Personalised fitness for a balanced lifestyle while on the road. Featuring the latest generation of cardio and strength training equipment, Hilton Fitness by Precor® takes a personalised approach to help you feel your best during your stay.

Indulge yourself at Imagine, our luxury spa, featuring eight relaxation rooms and a range of professional treatments. Enjoy complimentary access to the Thermal suite, including a hydrotherapy pool, aroma steam room, ice fountain, salt grotto, feature showers and sauna.



EAT & DRINK



MR TODIWALA'S KITCHEN

Chef Cyrus Todiwala brings his innovative cuisine to Hilton London Heathrow Airport Terminal 5. Featuring a menu of tempting pan-Indian dishes, Mr Todiwala's Kitchen is an exciting choice for an evening meal.



THE GALLERY

Dine on traditional and contemporary British specialities, prepared with the freshest seasonal ingredients. The Gallery's dishes are cooked to order all day long.



GALLERY BAR

The perfect place to meet for pre-dinner cocktails or to enjoy an evening nightcap, the Gallery Bar offers a relaxed environment and an extensive range of refreshments. Sip your favourite drink as you wind down in a lounge chair or try one of our handcrafted cocktails.

RIVER BAR

RIVER BAR

Soak up the riverbank view amid the vibrant atmosphere of this busy bar. Choose from a vast selection of draught beers and chilled fine wines, as well as delicious light snacks.



MUSETTI

Refined over generations, the family coffee blends are not to be missed in this London-style coffee shop. Complement your coffee with a freshly made sandwich or toasted panini, or be tempted by a host of home-made muffins, cakes and pastries.





heathrowt5.hilton.com

HILTON LONDON HEATHROW AIRPORT TERMINAL 5

Poyle Road | Colnbrook | SL3 0FF | United Kingdom
T: +44 (0)1753 686 860 | F: +44 (0)1753 766 405
E: heathrowt5.events@hilton.com



AMERICAS • EUROPE • MIDDLE EAST • AFRICA • ASIA • AUSTRALASIA